

# Do Up Our Alley

## A Town Centre Team Initiative

The Town Centre Team (TCT) made recommendation that the High Street alleyways be cleaned up as part of the TfL public realm improvements. Unfortunately not all the alleyways were included in the improvement project so the TCT put in a bid to the Mayor's High Street Fund and were successful.

The Mayor's fund has awarded Beckenham £20,000 for the Do Up Our Alley Project which will name, sign, clean up and improve the maintenance of the alleyways in Beckenham Town Centre.

There are 15 High Street Alleys between the War Memorial and Beckenham Junctions and we hope to make the £20,000 pound stretch as far as it can.

### We need your help!

- Can you to complete our before and after surveys. The before survey can be found online at [www.surveymonkey.com/r/P923BXS](http://www.surveymonkey.com/r/P923BXS)
- Can you help with our community clean up days? There will be at least 2 clean up days scheduled during the next few months. We will publicise them, however if you or a community group can help us please get in touch.
- Are you a local artist, sign maker, designer or artisan that can contribute to create public art and alley name signs?
- Are you a local trade that can assist with lighting, decoration, road surfacing and other jobs? In-kind and at-cost assistance will be much appreciated.
- Are you a local business that wants to make a contribution, there are many ways you can help (e.g. lunch for the clean up crews, financial contributions)?

### Get in touch

Email us at [alleys@coperscope.org.uk](mailto:alleys@coperscope.org.uk) or phone Marie on 020 8658 5355.



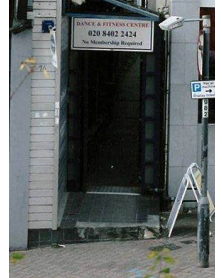
### The Mews

This alley commonly referred to as The Mews serves ground and basement office parking. Much of the property is in Church Commissioner's ownership. Some of the rear buildings were once stables, and the site of St Bride's House was once St George's Church House. This alley is just too big for this project to fix up it will need to be improved by the TfL improvement project.



### Coach Crier Alley

Historically a Gazebo was once nearby from which a Crier would alert the locals of the return from London of the coach of the Village Squire.



### Church Hill Alley

Historically this section of the High Street was named Church Hill.



### Stable Doors Close

Prior to the redevelopment of Rokewood apartments the Stable Doors auction rooms occupied this site.



### Thornton's Alley

From the late 19<sup>th</sup> century until recent years the stationer T.H. Thornton was located on this corner of the High Street, therefore it is known locally as Thornton's Corner.







### Legion Alley

For many years this was the access to the Roy Legion Club.



### Pavilion Parade

The entrance to Sainsbury's is adjacent to first the site of the first cinema in Beckenham, 'Pavilion Cinema' (opened 1914) and 'Ancient Lights' sign in the wall opposite. This alley will need to be improved by the TfL improvement project.



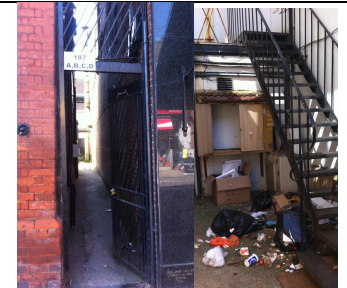
### Gordon Alley

To the west of this alley there was once a large 19<sup>th</sup> century villa - Gordon House. It was demolished for the present building that was Sainsbury's first store in Beckenham, opened in 1915.



### Burrell Alley

This alley leads to Burrell Passage and was is adjacent and behind a large building erected for Burton Menswear in 1930's. Two inscribed shop-front pilasters still remain.



### Wood House Alley

W.H. Smith and its neighbour are only two storeys high, this may be connected with the fact that it is the site of the 'Old Wood House' which had an entrance to Padburywheel works (circa 1904) where this alley is today.



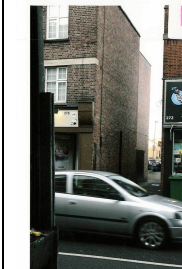
### Burton Passage

This alley is adjacent to the large building to the west erected for Burton Menswear.



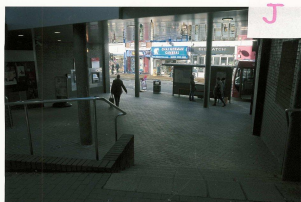
### Leather Alley

To the south of this alley was Brawn's a merchant all types of leather goods, with Beckenham Boot Works at the rear.



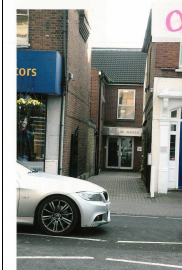
### Regal Alley

Alleyway to Odeon Cinema car park. Originally the 1930's Art Deco cinema was called the Regal and was built on a field used as the village's fairground.



### Blyton Place

The entrance to LIDL used to be occupied by United Dairies milk plant has been named in recognition of Beckenham residents author Enid Blyton and her nephew composer Carey Blyton. It is hoped the TfL public realm improvement project will use the space to celebrate their work.



### Ironmonger's Passage

Short entranceway to offices. Only historic connection found is that the village forge was located nearby.



